

# Dr. Jose Rizal Park

## A SONIC RE-IMAGINING

Designer: **Nicolas Sowers**

### PROJECT HIGHLIGHTS

Jose Rizal bust moved to a new **Voice Amplifier** surrounded by oral history "memorial walls." Improves connectivity to adjacent residential neighborhood

**Sound Stage** and Kulintang Play Deck, protected from freeway noise by the landscape berm

Paved viewing platform for triptych mosaic mural

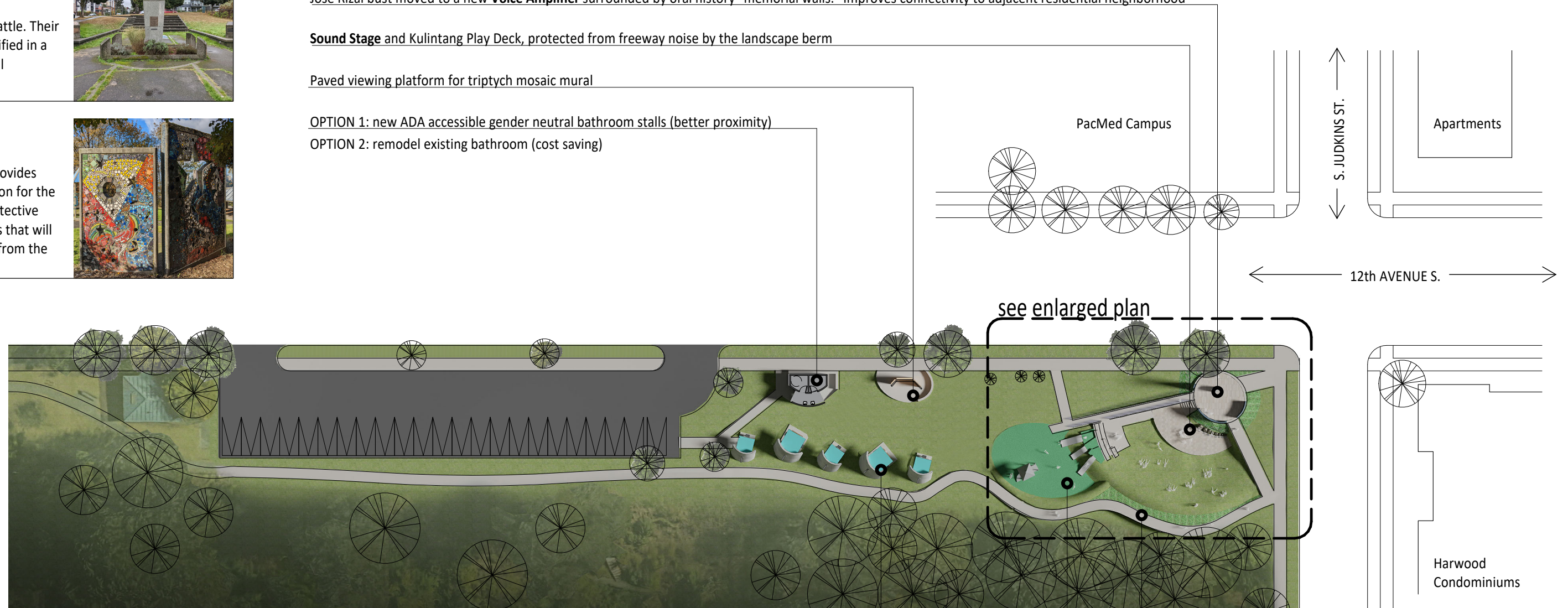
OPTION 1: new ADA accessible gender neutral bathroom stalls (better proximity)

OPTION 2: remodel existing bathroom (cost saving)

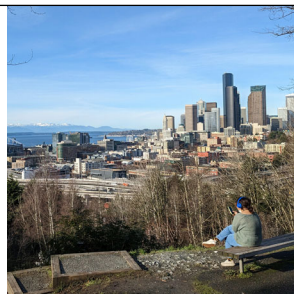
The bust and memorial plaques establish the historical significance of Filipino Americans contributions to Seattle. Their stories will be amplified in a revamped memorial enclosure.



Val Laigo's mural provides part of the inspiration for the "sound shells" - protective concrete enclosures that will shield park visitors from the freeway noise.



Views of downtown provide a civic connection to the park, but the freeways below also make for a noisy environment throughout the park.



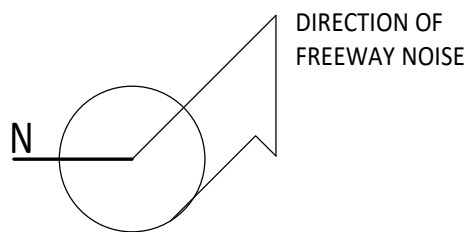
The existing fence edge forces the park into a linear arrangement which is not ideal for park activities. The downslope areas of the park feel cut off and unsafe.



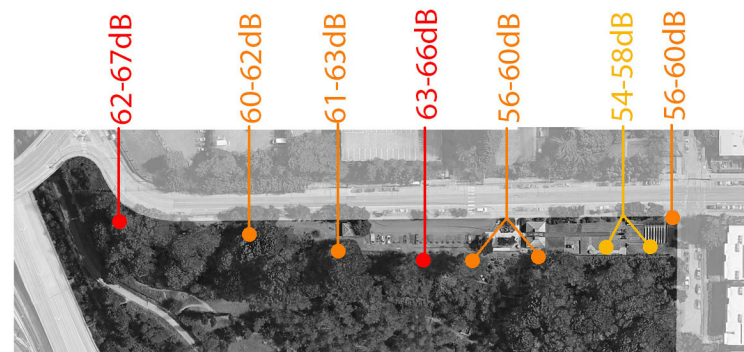
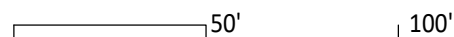
**Sound Shell** picnic areas protected from freeway noise

relocated play structure + upgraded turf area and new slides

**Bluff Edge Path** connects view to park activities & provides eyes on slope below



SCALE 1:600  
1" = 50'-0"

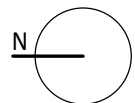


# Dr. Jose Rizal Park A SONIC RE-IMAGINING

← 12TH AVENUE S. →

### SURFACES & PLANTING

-  CONCRETE
-  LIMESTONE PAVERS
-  DURABLE PLAY SURFACE
-  GRASS
-  KINNIKINNICK / SUNNY NATIVE GROUNDCOVER
-  BEACH STRAWBERRY / PART-SHADE NATIVE GROUNDCOVER
-  EXISTING GROUND COVER AND PLANTING
-  LADY FERN / PART-SHADE SMALL NATIVE BUSH
-  RED FLOWERING CURRANT / SUNNY SMALL NATIVE BUSH



SCALE 1:150

12.5' 25'



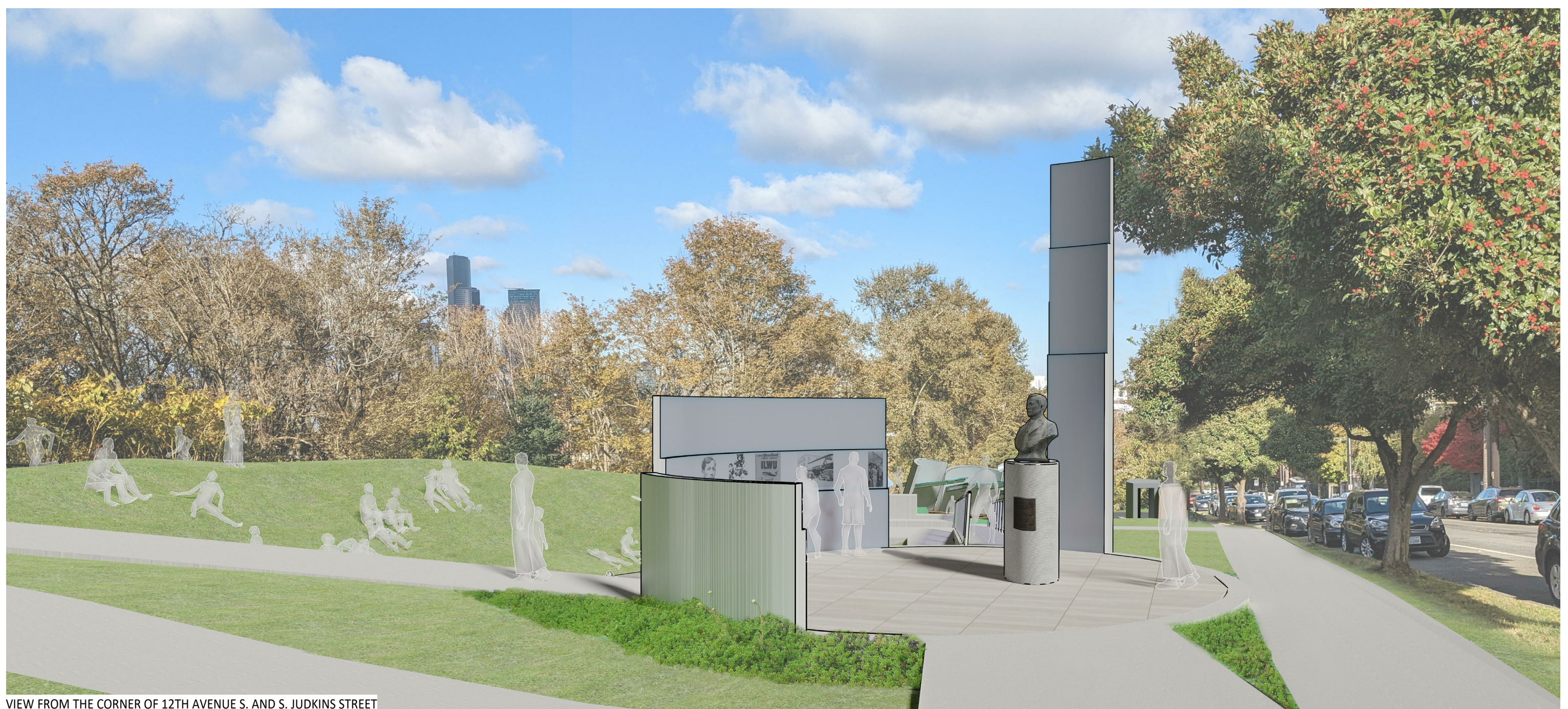
↑ S. JUDKINS ST. ↓

### DETAIL KEY

- 1. DR. JOSE RIZAL BUST
- 2. VOICE AMPLIFIER / MEMORIAL WALLS
- 3. SOUND STAGE
- 4. KULINTANG DECK
- 5. ACCESSIBLE SEATING

- 6. GRASS BERM
- 7. BLUFF EDGE PATH
- 8. LINE OF EXISTING FENCE
- 9. NEW FENCE & RETAINING WALL
- 10. RELOCATED PLAY STRUCTURE

- 11. SLIDES
- 12. TURF / PLAY AREA



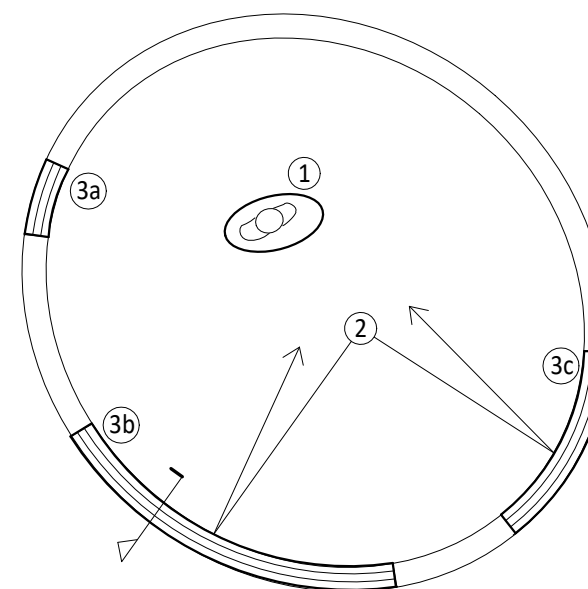
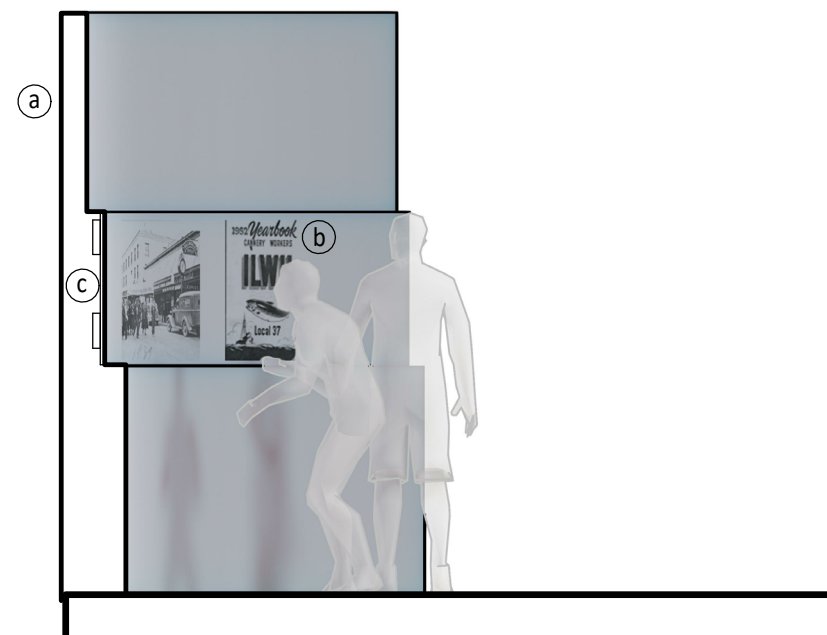
VIEW FROM THE CORNER OF 12TH AVENUE S. AND S. JUDKINS STREET

## AMPLIFIER WALL DETAIL

a. CONCRETE WALL - the ideal sound reflector, coated with a graffiti-resistant sealer

b. ETCHED IMAGES OF SEATTLE FILIPINO HISTORY - Images such as Local 37's unionization of the canning industry, protest movements and the founding of the park, among others sourced by the community

c. EMBEDDED TRANSDUCERS play audio from community-recorded oral histories. Option for rotating series of community sourced audio i.e. jazz artists, traditional Filipino music, language, histories and stories of other cultures including Duwamish, Vietnamese, Chinese, African-American, and other audio-based work



## JOSE RIZAL VOICE AMPLIFIER

1. JOSE RIZAL BUST - Relocated on a new granite pedestal to be more visible and connected to the adjacent neighborhood.

2. VOICE AMPLIFIER - The natural curve of the surrounding walls will make voices within the bust area more easily heard by individuals and groups gathering there.

3. AMPLIFIER WALL - See detail to the left

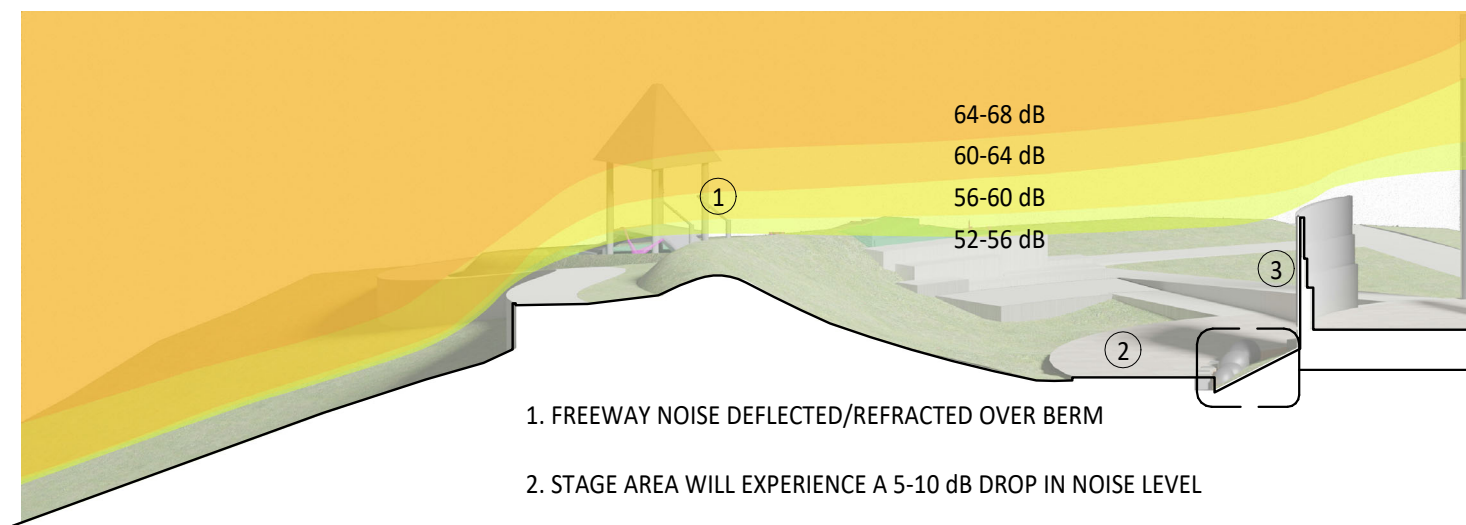
3a. Jose Rizal's story

3b. Seattle Filipinos and the making of the Park

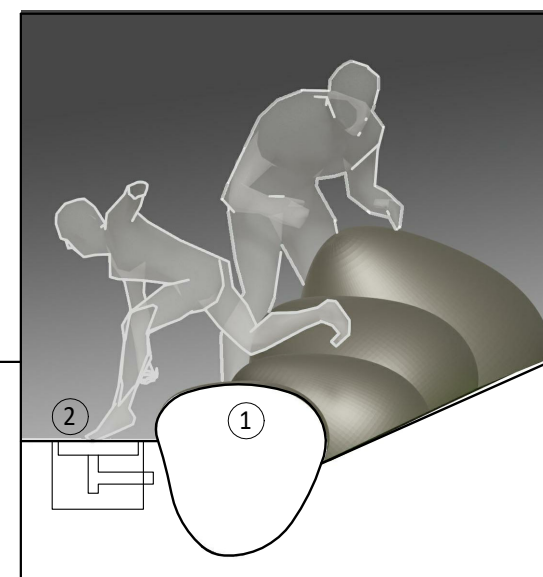
3c. Community-sourced oral histories, stories of the Duwamish people and other settlers and immigrants to Beacon Hill and International District.



VIEW OF THE STAGE AREA FROM THE LANDSCAPE BERM

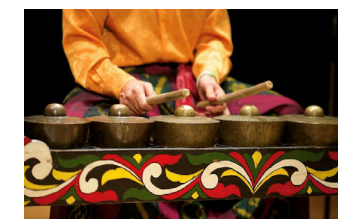


1. FREEWAY NOISE DEFLECTED/REFRACTED OVER BERM
2. STAGE AREA WILL EXPERIENCE A 5-10 dB DROP IN NOISE LEVEL
3. BACK SIDE OF MEMORIAL WALL SERVES AS A PARTIAL BAND SHELL, IMPROVING ACOUSTICS FOR PERFORMANCES LIKE THE FILIPINO JAZZ FESTIVAL

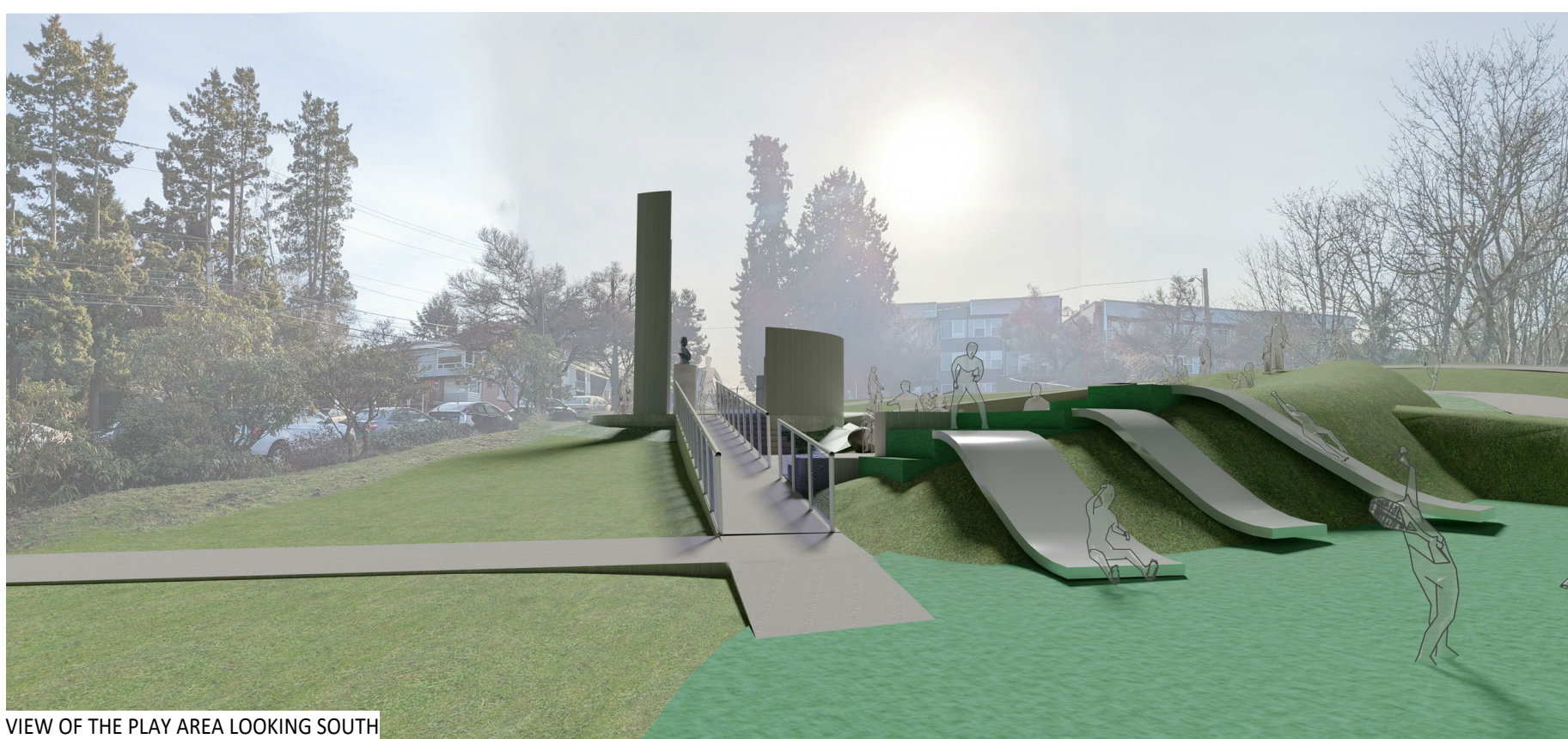


## KULINTANG PLAY DECK

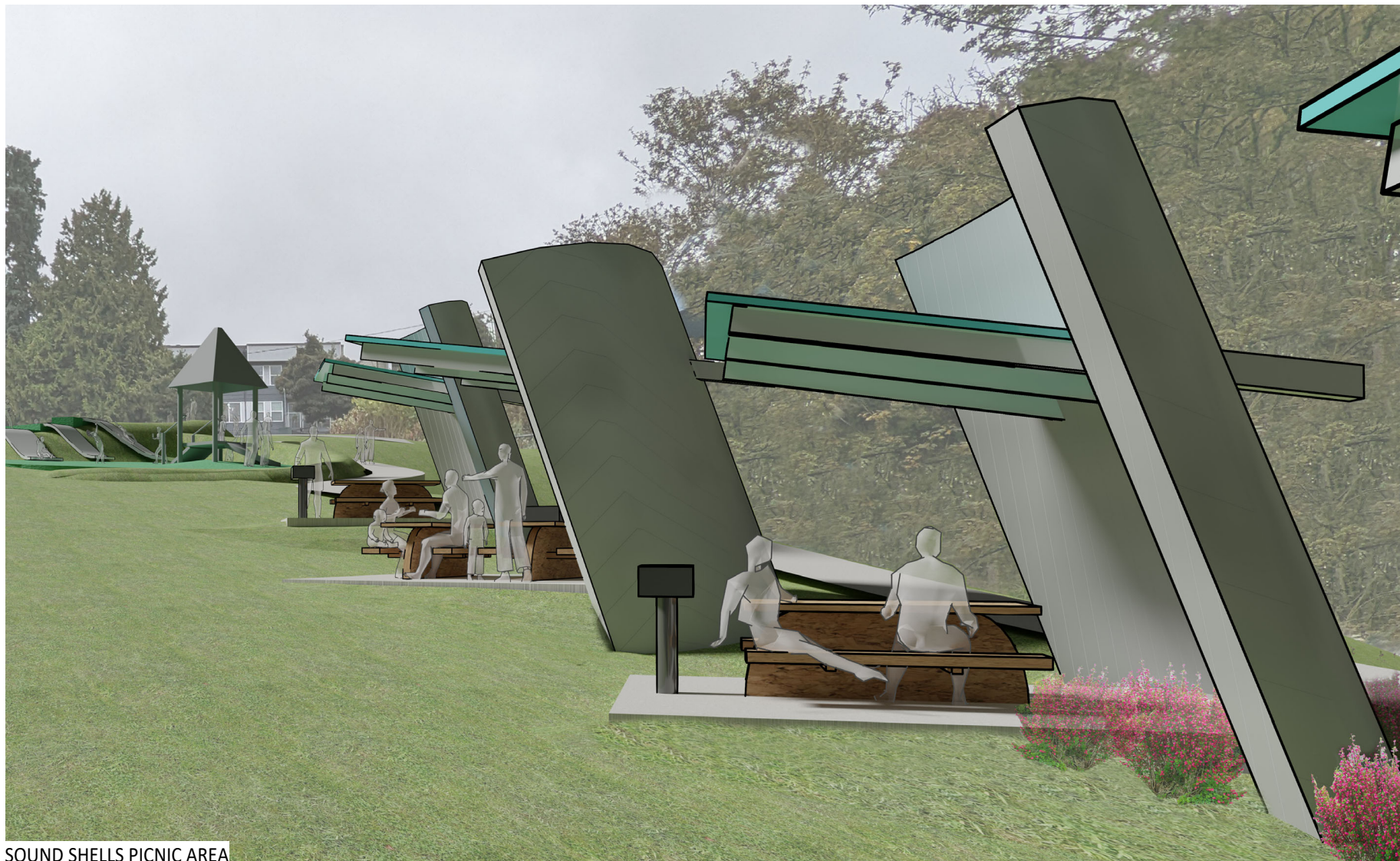
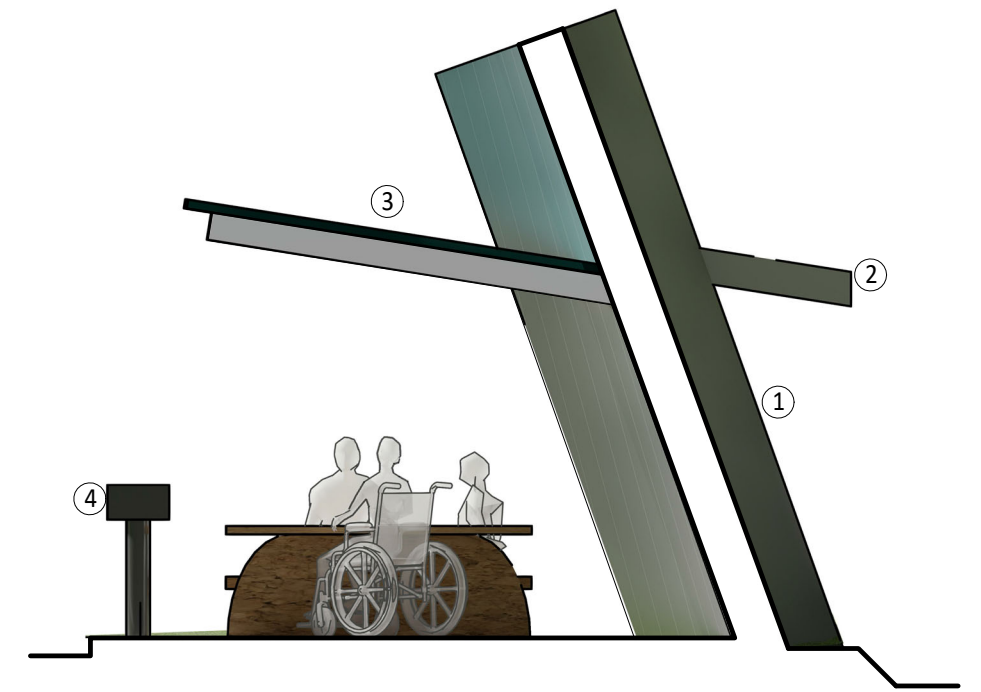
1. METAL GONGS - Eight vessels crafted to produce sound at equal intervals (not on the Western music scale)
2. CONTACT PLATE - A durable push plate that can be tapped or jumped on to hit the gong



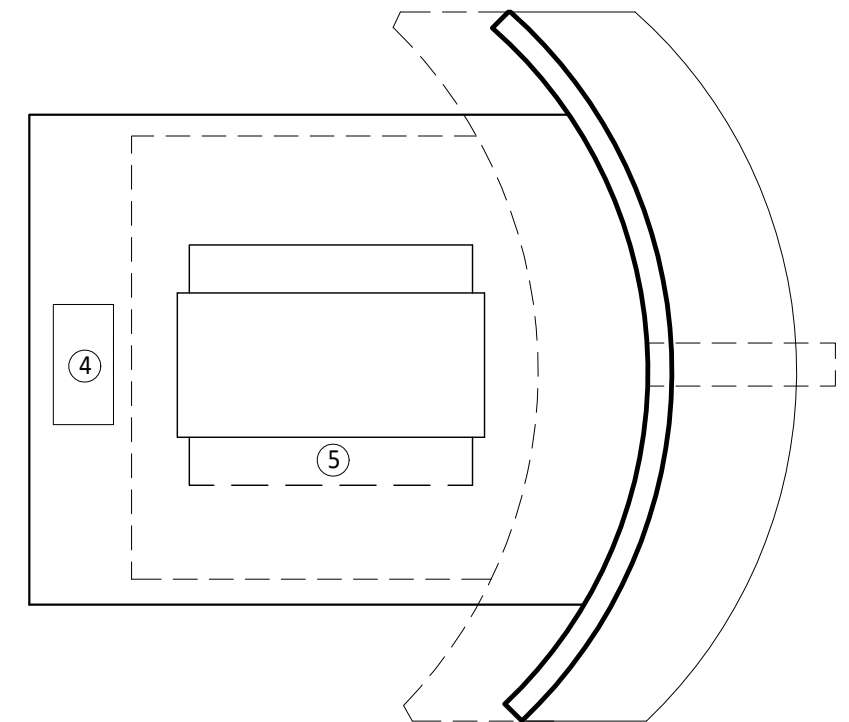
Traditional Kulintang instrument



VIEW OF THE PLAY AREA LOOKING SOUTH

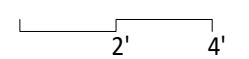


SOUND SHELLS PICNIC AREA



### SOUND SHELLS

SCALE: 1/4" = 1'-0"



1. CONCRETE SHELL - provides protection from freeway noise. Opportunity for community-sourced texture pattern, w/ graffiti resistant finish coat
2. RAINWATER SPOUT
3. TRANSLUCENT ROOF
4. BBQ
5. ACCESSIBLE SEATING